

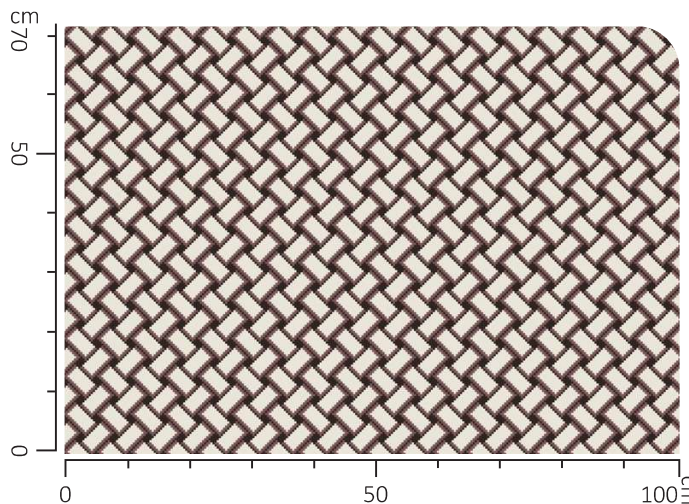
Padded

regular

Resembling a timeless basket weave, design Padded is a timeless, elegant addition to any decor.

The stunning craftsmanship and attention to detail make this pieces stand out in any interior, enhancing both style and coziness.

Get ready to sink your feet into pure luxury.



Repeat: 5 cm ↔ x 6 cm ↑

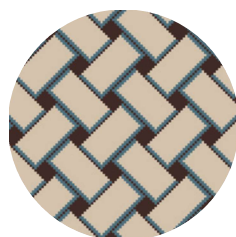
Available as stair runner (custom sizes) & wall to wall carpet (width 400 cm)



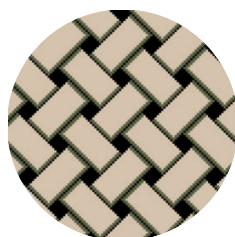
WCP0607/a



WCP0607/b



WCP0607/c



WCP0607/d



WCP0607/e



'In the world of Wilton, quality isn't just seen, it's felt in every intricate weave and stitch—true craftsmanship at its most elegant'

WILTON QUALITY

Wilton carpets, represent the highest standard of carpet craftsmanship, a tradition that melds timeless techniques with modern comfort. This particular collection of Wilton carpets boasts a cut loop construction, a feature that yields a distinctive texture, with the loops of the yarn cut to create a plush, upright finish. This method adds both visual depth and a tactile dimension to the carpet's surface.

Crafted from a blend of premium New Zealand and European wool, these carpets embrace the finest wool fibers available, recognized globally for their superior softness, resilience, and natural luster. New Zealand wool, in particular, is celebrated for its purity and consistent quality, while European wool brings in a heritage of robustness and rich texture. The judicious mix of these wools results in a carpet that epitomizes luxurious underfoot comfort and enduring elegance.

The jute backing of these Wilton carpets is another hallmark of their excellence. Jute, a naturally occurring, sustainable fiber, is renowned for its sturdiness and environmentally friendly attributes. Its intrinsic properties lend exceptional stability and longevity to the carpet structure, ensuring it maintains its shape and beauty over time.

These carpets are not just a treat for the eyes and feet; they are engineered for longevity. Wool's natural resilience to crushing and its ability to repel water and stains make it an ideal choice for areas with significant foot traffic. Despite its refined appearance, the durability of these carpets means they are capable of withstanding the rigors of daily life, be it in a bustling household or a professional setting.

In sum, Wilton carpets with a cut loop, made from the finest New Zealand and European wools, backed with robust jute, offer an unmatched combination of elegance, comfort, and durability. They embody a truly sophisticated choice for those who desire a carpet that's as enduring as it is luxurious.

Carpet specification

- Carpet height: 10 mm (including backing)
- Pile height: 8 mm (without backing)
- Weight: 1500 gr/ m2
- Material yarn: 100% wool
- Backing: jute (biodegradable and eco-friendly)
- Made in Europe (Spain)



Icon index: see page 116



Environmental responsibility

Sustainability and product quality are paramount when selecting materials and looms for our collection.

European-manufactured Wilton carpets fit the bill perfectly, presenting a blend of timeless appeal, durability, and environmental responsibility.

Our Wilton Quality Carpets and Rugs epitomize sustainability through a combination of responsible manufacturing practices and premium materials. These are the key factors that contribute to their eco-friendly profile:

- European On-Demand Production: By producing our carpets and rugs on-demand in Europe, we not only adhere to high labor and environmental standards but also eliminate surplus production. This made-to-order model ensures that we craft only what is required, helping to preserve resources and reduce waste.
- Bespoke Craftsmanship: The bespoke nature of our service means each item is tailor-made to the individual specifications of our clients, which maximizes material usage and minimizes offcuts. This personalization also translates into a more valued and long-lasting product.
- New Zealand Wool: The durable, long-lasting wool from New Zealand is a renewable resource that confers a natural resilience to our carpets and rugs. This wool ensures they stand up to years of use, making them sustainable additions to any space by requiring less frequent replacement.
- Jute Backing: Jute is a natural, biodegradable plant fiber, and its use in the backing of our carpets and rugs supports sustainability. Jute is a reed-like plant that has a lower environmental impact to grow, therefore when combined with wool, it makes our products nearly entirely composed of renewable materials.
- Strict European Legislation Compliance: European laws strictly regulate production to prevent overproduction, ensuring environmental protection and efficient resource use. Our compliance to these laws demonstrates our commitment to sustainability and responsible manufacturing.



- GUT Label: This certification signifies that our carpets meet the rigorous ecological standards set by the Community of Environmentally Friendly Carpets. The GUT label indicates low emissions and pollutants, contributing to better indoor air quality and a healthier living environment.

- A+ Emission Label: Our carpets and rugs have achieved an A+ label for emissions, meaning they release minimal volatile organic compounds (VOCs) into the environment. This ensures better air quality and less impact on human health.

- REACH Chemical Legislation: Compliance with REACH, which stands for Registration, Evaluation, Authorisation, and Restriction of Chemicals, ensures that all chemicals used are rigorously assessed for their impact on human health and the environment. Products meeting REACH standards safeguard consumers and the planet from harmful substances.

In essence, our Wilton Quality Carpets and Rugs represent our commitment of environmental friendly production. With long lasting quality, sustainable materials like New Zealand wool and jute, on-demand European production, and a profound commitment to stringent eco-labels and chemical regulations, we offer a product that not only enlivens your space but also protects the world we share.

Flooring symbols explained

Cracking our carpet icons code, what do these flooring symbols mean?

Our Axminster quality holds a variety of symbols and icons to describe the quality and environmental certification of our carpet. On this page we will explain these symbols so you can check if our quality fits the requirements of your project & suits your needs.



- 1 100 % wool (WO)
- 2 Suitable for use with underfloor heating
- 3 Antistatic
- 4 Reduction of impact noise
- 5 Sound absorption
- 6 Lightfastness
- 7 Suitable for stairs
- 8 Suitable for chair castors, occasional use
- 9 Suitable for bedrooms

- 10 Suitable for home office
- 11 Suitable for living room
- 12 This standard specifies that carpets must meet certain safety requirements. This standard also defines slip resistance.
- 13 Class B, flame retardant
- 14 mothproof
- 15 Luxury Class LC 5: the number of crowns indicates how soft and comfortable the underfoot is. 5 crowns is the most comfortable.
- 16 Suitable for areas with heavy public traffic like hotels, reception halls, offices & entrance areas.
- 17 Made in Europe
- 18 The letters indicate the level of emission of the product in volatile pollutants into the indoor air of a room: the rating "A+" indicates that the product emits very little.
- 19 No formaldehyde added (NA = not added).
- 20 The EN 14041 standard specifies that carpets must meet certain safety requirements. This standard also defines slip resistance. Textile floor coverings must therefore have a dynamic coefficient of friction >0.3 when dry and clean. If this is the case, the product can be marked with the symbol "DS"
- 21 The REACH icon signifies the EU's safety regulations for chemical usage in industries like textile flooring. If a product features this icon, it complies with the REACH framework, implying responsible and safe chemical handling during its production.
- 22 All products under the GUT label are stringently tested for harmful substances and emissions according to the latest findings and techniques available.