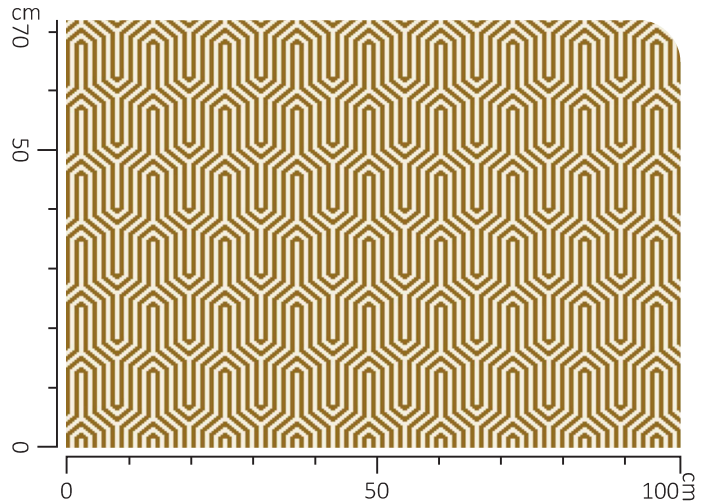


Maze

one size

Our long-time favorite, Maze design, strikes the perfect balance between a timeless, modern pattern and an eye-catching statement for your stairs. This graphic design adds both pattern and pizzazz to your hallway without going overboard.



Repeat: 10,5 cm ↔ x 11,5 cm ↑

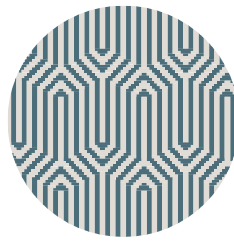
Available as stair runner (custom sizes),
wall to wall carpet (width 400 cm) & area rug



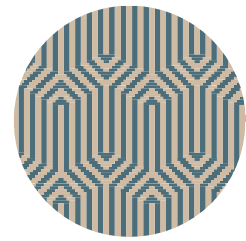
WLP3007/a



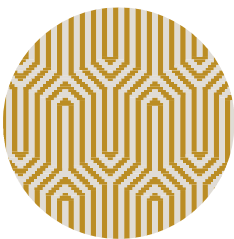
WLP3007/b



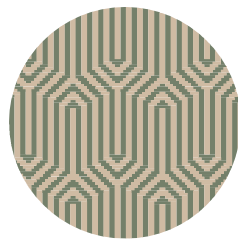
WLP3007/c



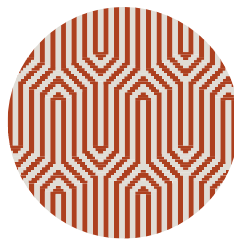
WLP3007/d



WLP3007/e



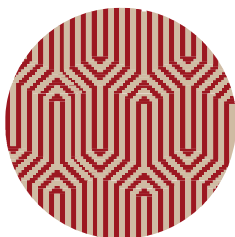
WLP3007/f



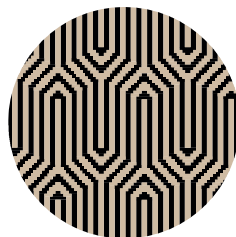
WLP3007/g



WLP3007/h



WLP3007/i



WLP3007/j

WILTON QUALITY

Wilton Quality Carpets are a great example of traditional craftsmanship classic mixed with modern luxury. Their origin traces back to the early Wilton weaving method, a time-honored technique developed over centuries. Wilton carpets trace their history back to Wilton, a small town in Wiltshire, England. This town became a carpet-making hub in the 18th century, with the first Wilton carpet loom established around 1741. This traditional weaving method has grown to symbolize the epitome of carpet-making quality and wilton carpet is still made with a similar weaving process.

Carpet specification

- Carpet height: 7 mm (including backing)
- Pile height: 5 mm (without backing)
- Weight: 1500 gr/ m2
- Material yarn: 100% wool
- Backing: jute (biodegradable and eco-friendly)
- Made in Europe (Spain)

Technically, Wilton carpets are versatile, offering various textures such as looped pile, cut pile, and high-low loops. Looped pile is characterized by uncut yarn loops, creating a durable and consistent surface, ideal for high-traffic areas.

Choosing a Wilton carpet means investing in lasting quality. It's not merely a floor covering but an heirloom piece that nods to the rich legacy of textile artistry. With every step on a Wilton carpet, you're walking on centuries of history, refined into a luxury that stands the test of time.

Let your stair runner & wall to wall carpet make a statement with loop pile Wilton-weave carpets and witness the perfect blend of comfort, resilience, charm, and superior quality.



Icon index: see page 14



Environmental responsibility

Sustainability and product quality are paramount when selecting materials and looms for our collection.

European-manufactured Wilton carpets fit the bill perfectly, presenting a blend of timeless appeal, durability, and environmental responsibility.

Our Wilton Quality Carpets and Rugs epitomize sustainability through a combination of responsible manufacturing practices and premium materials. These are the key factors that contribute to their eco-friendly profile:

- European On-Demand Production: By producing our carpets and rugs on-demand in Europe, we not only adhere to high labor and environmental standards but also eliminate surplus production. This made-to-order model ensures that we craft only what is required, helping to preserve resources and reduce waste.
- Bespoke Craftsmanship: The bespoke nature of our service means each item is tailor-made to the individual specifications of our clients, which maximizes material usage and minimizes offcuts. This personalization also translates into a more valued and long-lasting product.
- New Zealand Wool: The durable, long-lasting wool from New Zealand is a renewable resource that confers a natural resilience to our carpets and rugs. This wool ensures they stand up to years of use, making them sustainable additions to any space by requiring less frequent replacement.
- Jute Backing: Jute is a natural, biodegradable plant fiber, and its use in the backing of our carpets and rugs supports sustainability. Jute is a reed-like plant that has a lower environmental impact to grow, therefore when combined with wool, it makes our products nearly entirely composed of renewable materials.
- Strict European Legislation Compliance: European laws strictly regulate production to prevent overproduction, ensuring environmental protection and efficient resource use. Our compliance to these laws demonstrates our commitment to sustainability and responsible manufacturing.



- GUT Label: This certification signifies that our carpets meet the rigorous ecological standards set by the Community of Environmentally Friendly Carpets. The GUT label indicates low emissions and pollutants, contributing to better indoor air quality and a healthier living environment.

- A+ Emission Label: Our carpets and rugs have achieved an A+ label for emissions, meaning they release minimal volatile organic compounds (VOCs) into the environment. This ensures better air quality and less impact on human health.

- REACH Chemical Legislation: Compliance with REACH, which stands for Registration, Evaluation, Authorisation, and Restriction of Chemicals, ensures that all chemicals used are rigorously assessed for their impact on human health and the environment. Products meeting REACH standards safeguard consumers and the planet from harmful substances.

In essence, our Wilton Quality Carpets and Rugs represent our commitment of environmental friendly production. With long lasting quality, sustainable materials like New Zealand wool and jute, on-demand European production, and a profound commitment to stringent eco-labels and chemical regulations, we offer a product that not only enlivens your space but also protects the world we share.